



# MONTHLY MEMBERSHIP PROGRESS REPORT

District 19 A

Results as of: 6/30/2017

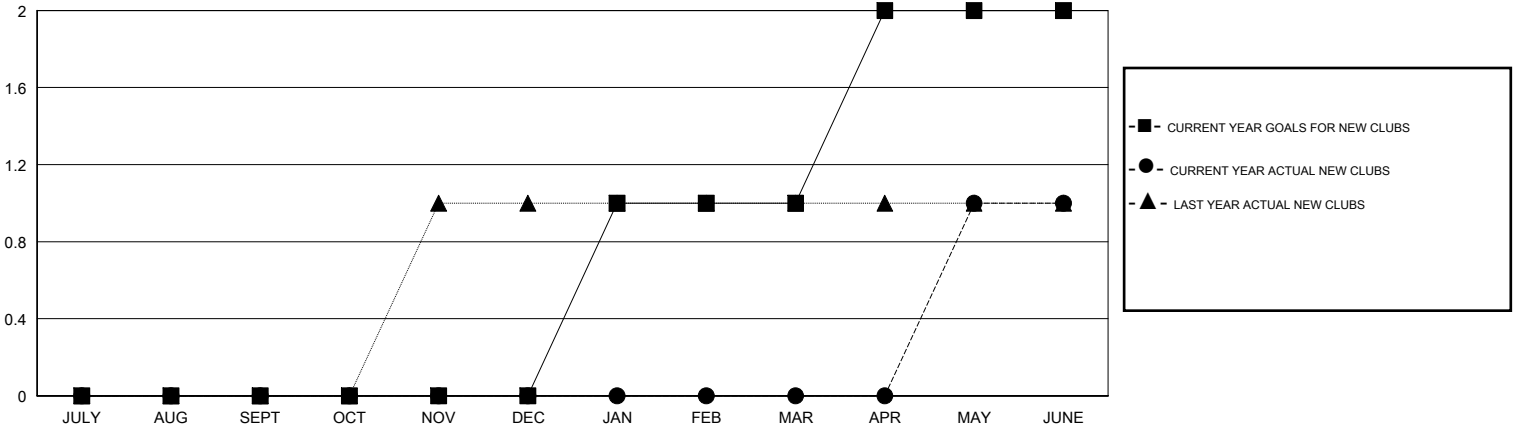
GMT: OPEN

LOCATION BRITISH COLUMBIA

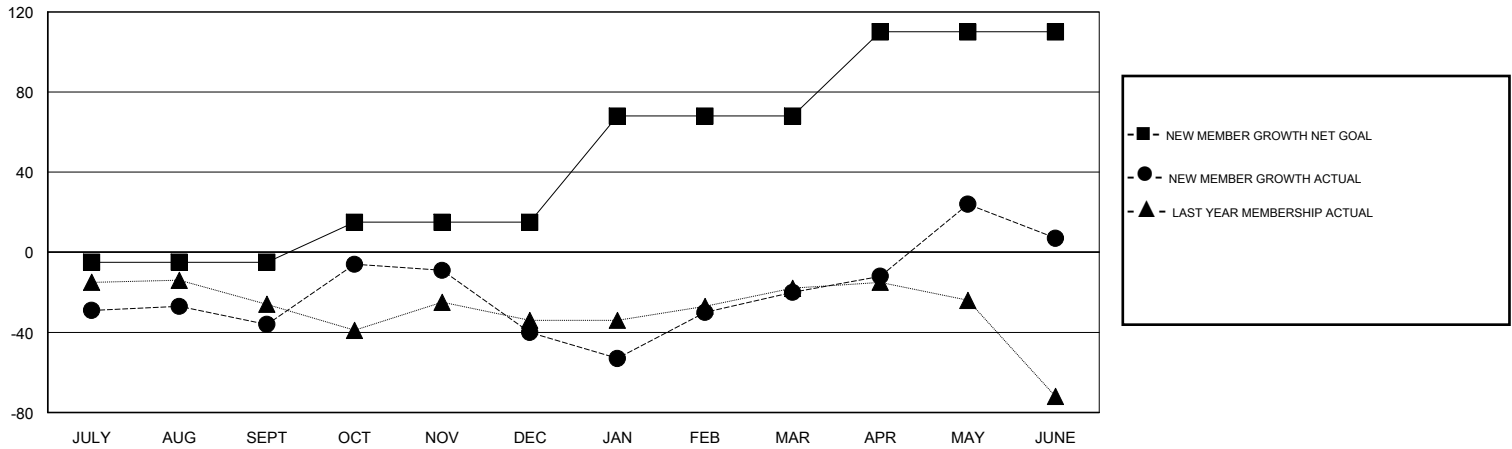
GMT CA

Clubs				Members			
RESULTS FOR 2016-2017				RESULTS FOR 2016-2017			
QUARTER	NEW CLUB GOAL	NEW CLUBS	DROPPED CLUBS	QUARTER	NEW MEMBER GROWTH NET GOAL (not reinstated or transfers)	NEW MEMBER GROWTH ACTUAL (not reinstated or transfers)	DROPPED MEMBERS ACTUAL (including transfers)
JULY/AUG/SEPT	0	0	1	JULY/AUG/SEPT	-5	34	70
OCT/NOV/DEC	0	0	1	OCT/NOV/DEC	20	53	57
JAN/FEB/MAR	1	0	0	JAN/FEB/MAR	53	56	36
APR/MAY/JUNE	1	1	1	APR/MAY/JUNE	42	71	44

GOALS AND ACTUAL NEW CLUBS CUMULATIVE



GOALS AND ACTUAL MEMBERS CUMULATIVE



DROPPED CLUBS: 3	38 CLUBS OF 60 ADDED 1 OR MORE NEW MEMBERS	<b>GENDER DISTRIBUTION</b>
		MALE 651 (57.06%)
		FEMALE 490 (42.94%)
<b>DROPPED MEMBERS</b>	<a href="#">CLICK HERE FOR CUMULATIVE MEMBERSHIP DATA</a>	TOTAL FAMILY UNIT MEMBERS 83
DECEASED 6		FAMILY MEMBERS PAYING HALF DUES 43
CLUB CANCELLED 23		
OTHER 178		
<b>TOTAL 207</b>		